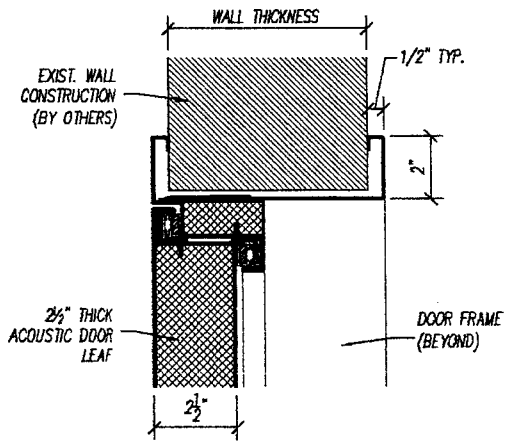
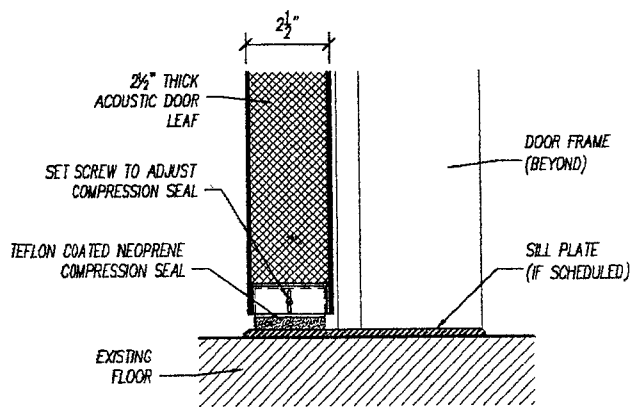


JAMB DETAIL



HEAD DETAIL

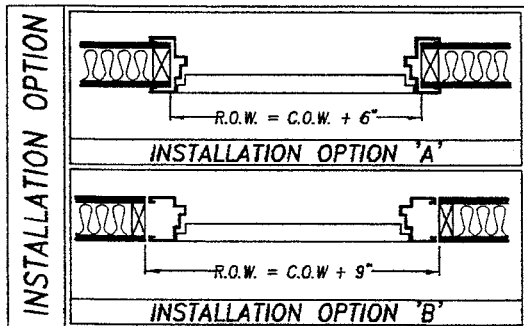
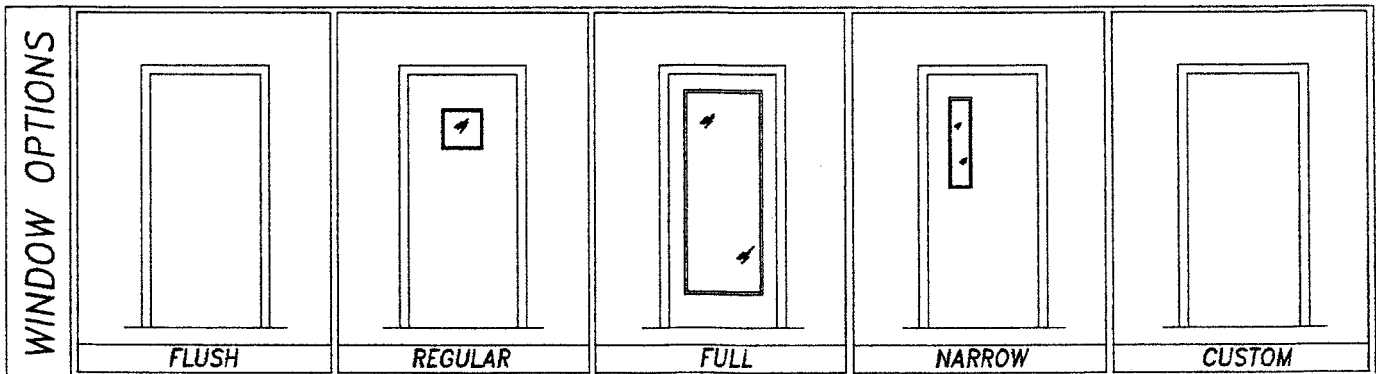
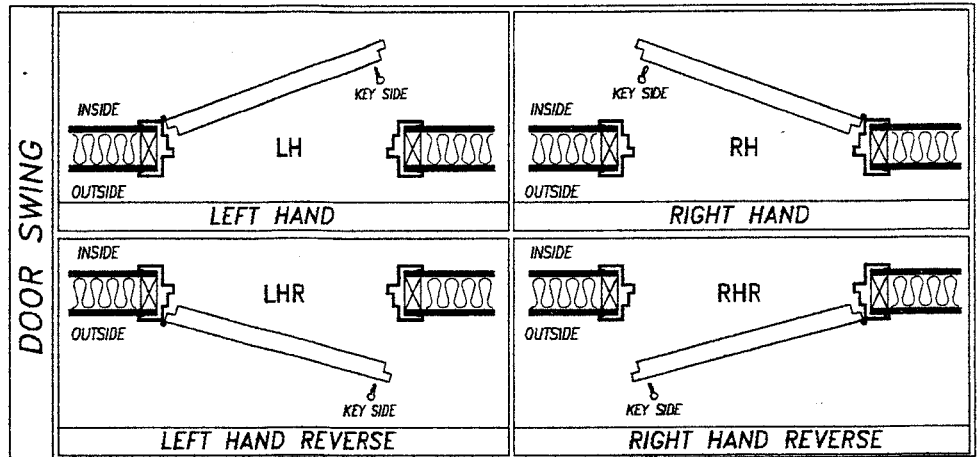
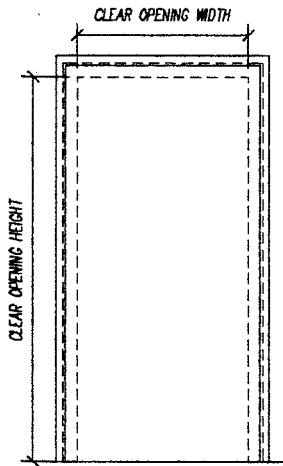


SILL DETAIL

PROJECT NAME: \_\_\_\_\_ CUSTOMER: \_\_\_\_\_

APPLICATION:  INTERIOR  EXTERIOR FINISH: \_\_\_\_\_ NB JOB #: \_\_\_\_\_

DOOR SPECIFICATIONS								
DOOR No.	DOOR SWING	WINDOW OPTION	INSTALLATION OPTION	CLEAR OPENING WIDTH	CLEAR OPENING HEIGHT	ROUGH OPENING WIDTH	ROUGH OPENING HEIGHT	WALL THICKNESS



HARDWARE SCHEDULE	
HINGES	MFG. STANDARD CAM-LIFT HINGES (QTY. (2) PER LEAF)
PUSH/PULL HANDLE	TRIMCO 1195-2 PUSH/PULL HANDLE (QTY. (2) BACK-TO-BACK, US26D FINISH)
THRESHOLD	ONE-PIECE 1/4" ALUMINUM SILL PLATE
DOOR BOTTOM	MFG. STANDARD TEFLON COATED COMPRESSION SEAL
HD/JMB/ASTRAGAL SEALS	MFG. STANDARD DOUBLE MAGNETIC SEALS

NOTES: \_\_\_\_\_